

Flatglaze® Rooflights



The Twinfix range of high quality rooflights are designed to provide the maximum efficient distribution of natural light, together with a variety of ventilation options.

- Building Regulation Part L compliant design to achieve low U value targets
- Non Fragile in accordance with ACR[M]001:2005 and CWCT TN67
- Ventilation options for Natural Ventilation in accordance with Building Regulation Part F
- Automatic Opening Vents for Smoke Ventilation can be accommodated in larger rooflights

Twinfix Flatglaze Rooflights are designed to be installed to a weathered builder's kerb, minimum 5° pitch.

Square and rectangular rooflights are available in one glass pane, to suit variable kerb sizes up to 3m² total size. Larger sizes are available with glazing bar divisions.

Circular rooflights are available in one glass pane, up to Ø1.8m. Larger sizes up to Ø8m are available with glazing bar divisions.

Elliptical shape rooflights are also available.

Twinfix Flatglaze Rooflights are manufactured from mill finish or polyester powder coated aluminium extrusions and are glazed with hermetically sealed argon filled double glazed units as standard.

Standard Glazing Options

| Glazing | Glazing Options | U-Value | Light Transmission | G-Value |
|---|-----------------|------------------------|--------------------|---------|
| Outer: 6mm Toughened Cavity: 16mm Argon Inner: 6.4mm Laminated 6.0mm toughened with soft Low-E coating | Clear | 1.2 W/m ² K | 78% | 0.68 |
| | Solar Control | 1.1 W/m ² K | 67% | 0.41 |
| | Self-Cleaning | 1.2 W/m ² K | 76% | 0.65 |
| | Tinted Bronze | 1.2 W/m ² K | 43% | 0.42 |
| Other glazing options or specification are available on request | | | | |

British Standards

Twinfix Flatglaze are designed to standard loadings of 640 N/m² (wind) and 750 N/m² (snow) and in accordance with the following British Standards:

- BS 6375 : Part 1 : Weather Tightness
- BS EN 1026 : Air Permeability
- BS EN 1027 : Water Tightness Test
- BS EN 12211 : Wind Resistance Test

Ventilation Options

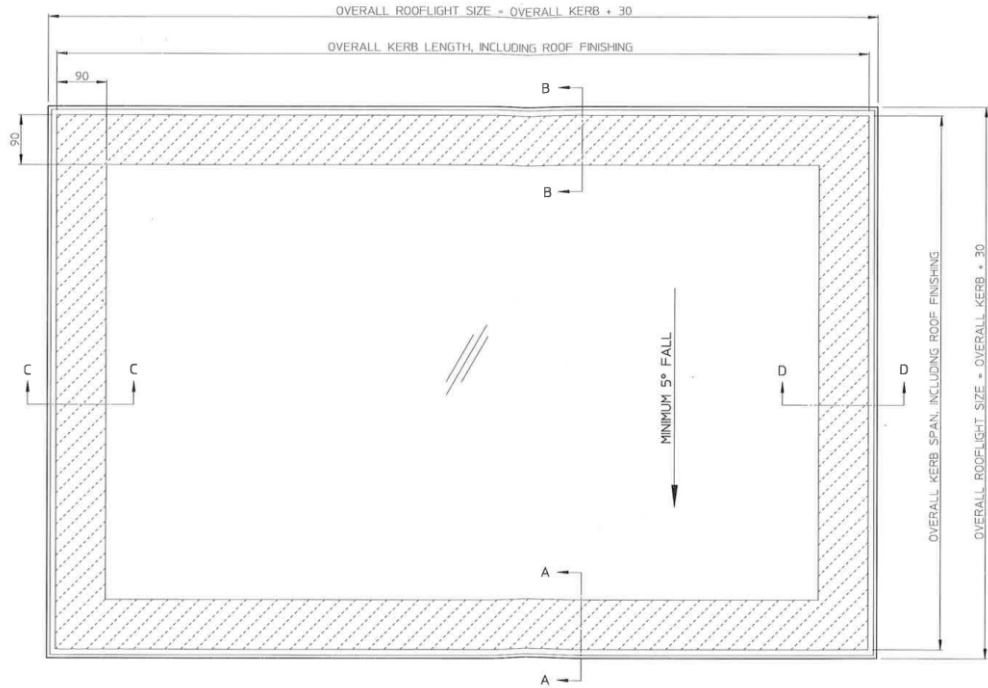
Hinged Top or Slide Open ventilation, for square or rectangular, single pane rooflights.

Glaze in opening vents are available for circular or large size rooflights.

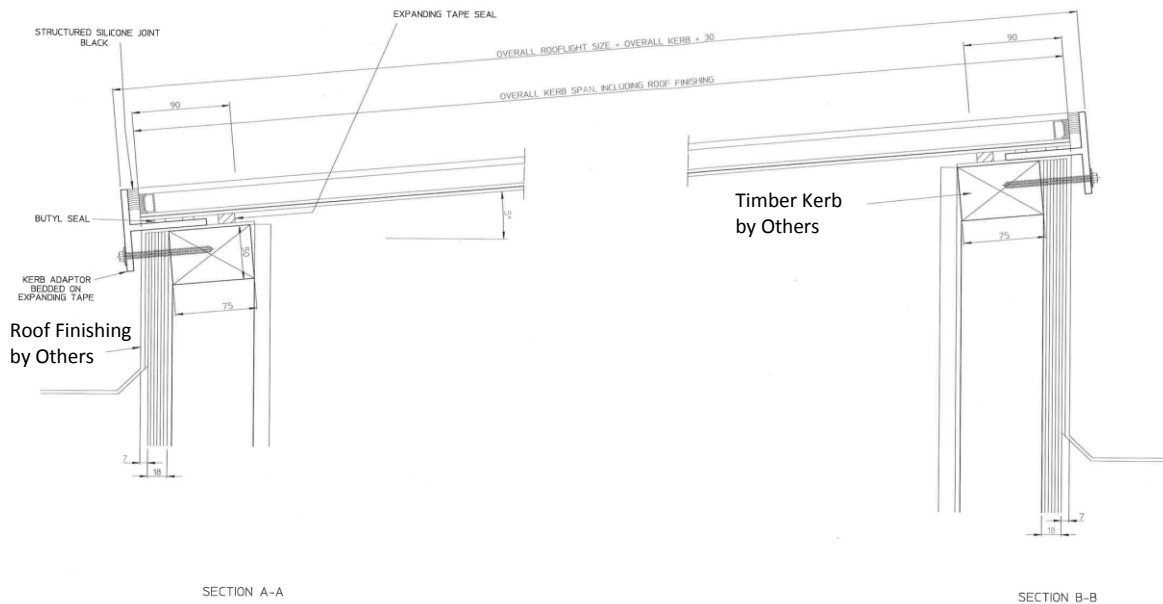
All opening vents can be operated manually or by electric actuators.

For further information please contact our Sales or Technical Department.

Typical Details

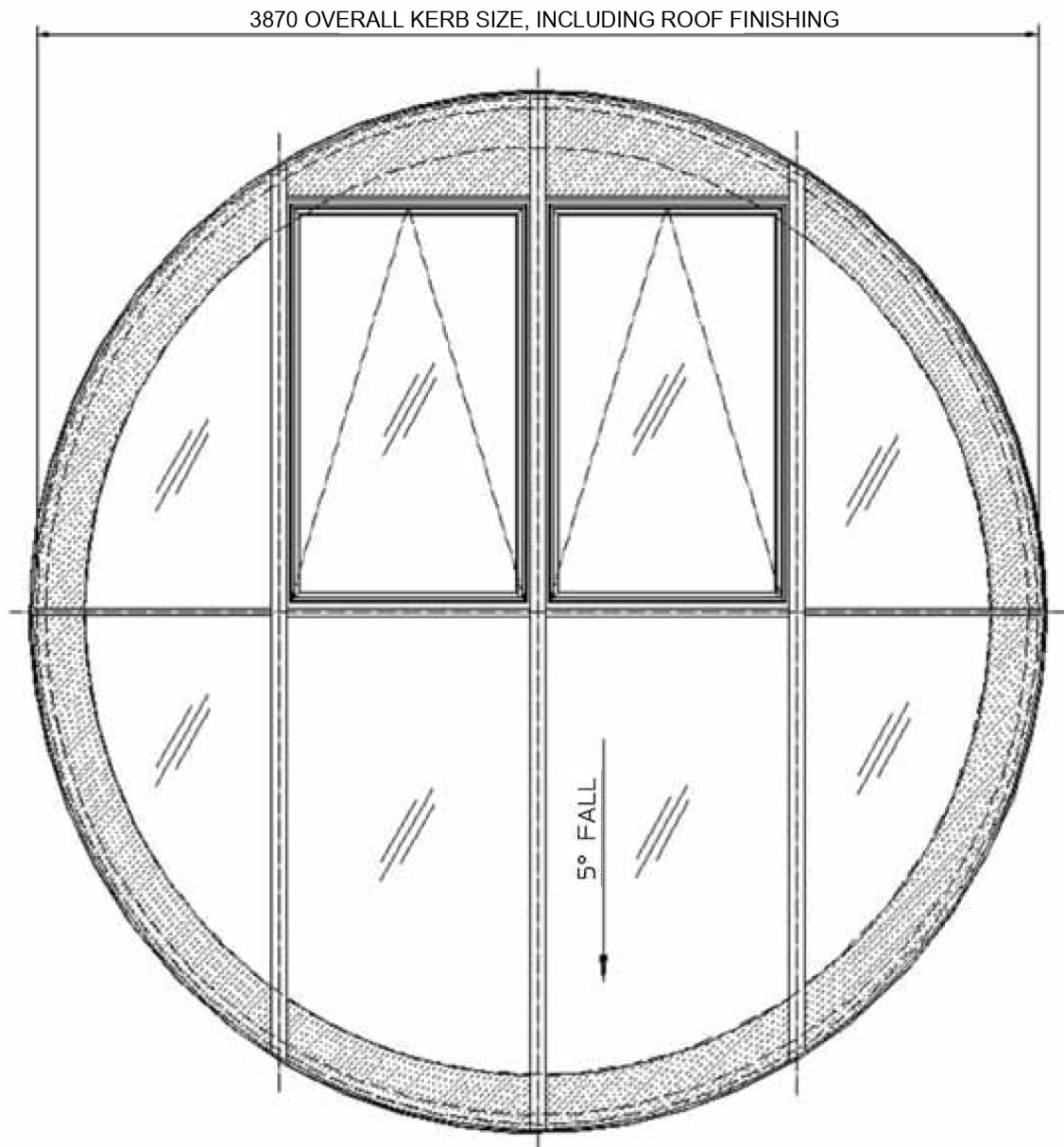


Plan View



Kerb Section View

Bespoke Circular Rooflight with Opening Rooflights



Plan View

As our policy is one of continuous improvement, we reserve the right to change specifications without prior notice. All information, recommendations or advice (written or oral) given by Twinfix is given in good faith and to the best of our knowledge.

©June 2011

201 Cavendish Place
Birchwood Park
Birchwood
Warrington, UK
WA3 6WU

