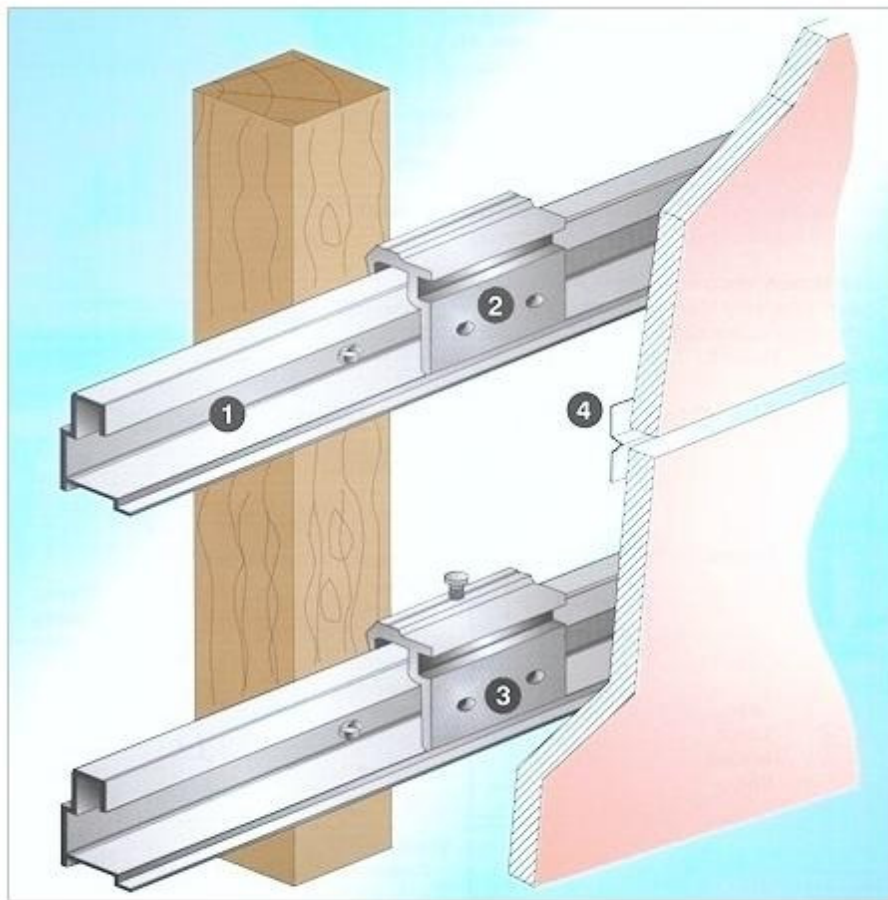


# Rainscreen Cladding Support System

## *Hidden Rail - Ref TWF 2802*



### ***Hidden rail fixing system using screws or rivets***

- 1 Aluminium support rail
- 2 Aluminium panel bracket - fixed
- 3 Aluminium panel bracket - adjustable
- 4 Aluminium universal joint

Sales Hotline  
Tel: 01925 811311  
Fax: 01925 852955

**TWINFIX**

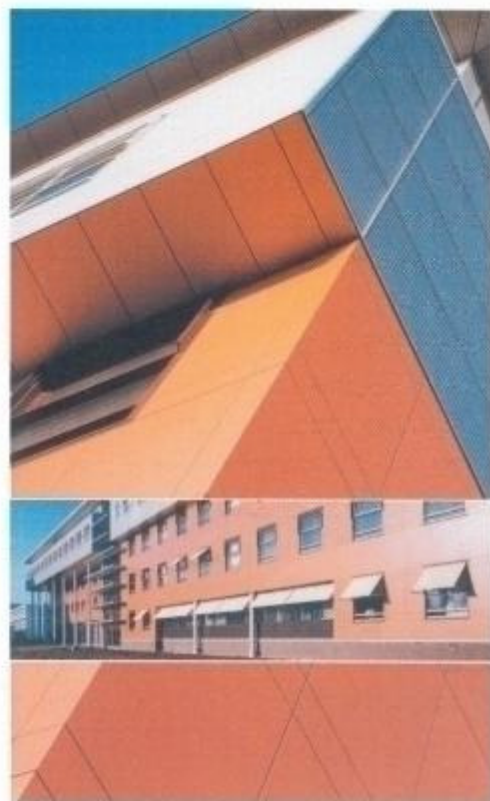
# Rainscreen Cladding Support System

## Hidden Rail - Ref TWF 2802

Twinfix cladding support systems can be used to install many different types of high performance external cladding panels, on both new build or refurbishment projects.

All Twinfix systems are fully ventilated at upper and lower edges. Some form of water resistant insulation is usually positioned immediately adjacent to the internal wall, leaving a minimum ventilation gap of 25mm between the insulation and the rainscreen cladding panel. This eliminates moisture problems in the façade structure and keeps local cold bridging to a minimum. This type of ventilated façade provides good levels of internal insulation and helps prevent structural corrosion. The consequent low temperature fluctuation only permits very minimal movement of the main load-bearing structure, which is good for the long life of any building.

The TWF 2802 system is a highly engineered arrangement of top quality components specially developed for fixing to both new and existing structures. It can be used for all buildings, regardless of height, where a flush and flat finish is required. Available as an all aluminium system, it is non-combustible and rust free. This system also has the added aesthetic appeal of being invisibly fixed.



### The TWF 2802 system consists of:

- Aluminium support rail
- Aluminium adjustable bracket
- Aluminium fixed bracket
- Aluminium standard bracket
- Aluminium angle bracket
- Thread cutting screws
- Aluminium ventilation profiles (also available in PVC)

### Other options available include:

- Numerous adjustable aluminium projection wall brackets
- Aluminium Omegas
- Aluminium Zeds
- Aluminium 'L' rails
- Aluminium 'T' rails
- Internal and external aluminium corner profiles (also available in PVC)
- Various styles of aluminium horizontal joint profiles (also available in PVC)

In addition to the TWF 2802 there are other Twinfix systems available for installing rainscreen cladding. Please contact us for details.



## TWINFIX

201 Cavendish Place, Birchwood Park  
Birchwood, Warrington, WA3 6WU

Tel: 01925 811311 Fax: 01925 852955

email: [cladding@twinfix.co.uk](mailto:cladding@twinfix.co.uk)