

Rainscreen Cladding Support System

Rivet Fix - Ref TWF 2014



System with rivets for fixing on to an aluminium subframe

- 1 Aluminium 'L' rail
- 2 Aluminium 'T' rail
- 3 Aluminium angle bracket
- 4 External corner profile, available in PVC or aluminium
- 5 Adjustable aluminium projection wall bracket
- 6 Aluminium large headed rivet (with colour matched head)
- 7 PVC tape

Sales Hotline
Tel: 01925 811311
Fax: 01925 852955

TWINFIX

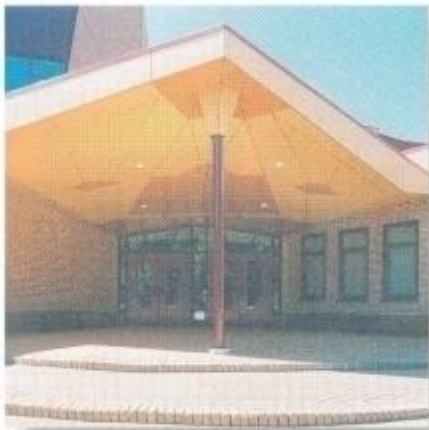
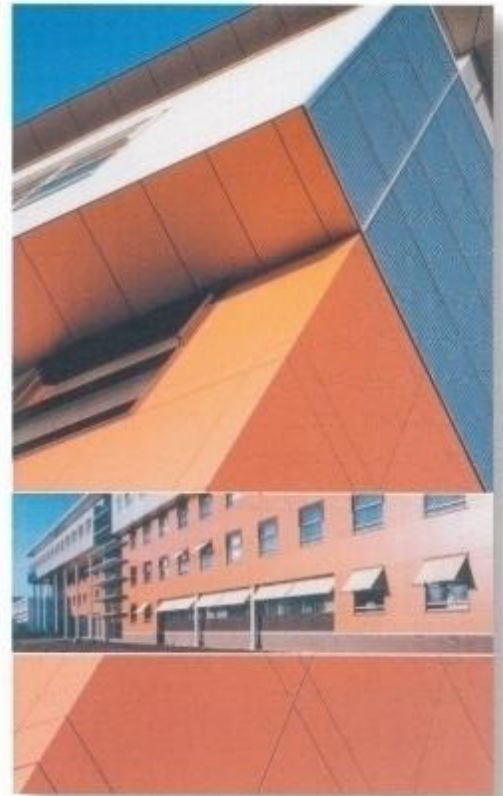
Rainscreen Cladding Support System

Rivet Fix - Ref TWF 2014

Twinfix cladding support systems can be used to install many different types of high performance external cladding panels, on both new build or refurbishment projects.

All Twinfix systems are fully ventilated at upper and lower edges. Some form of water resistant insulation is usually positioned immediately adjacent to the internal wall, leaving a minimum ventilation gap of 25mm between the insulation and the rainscreen cladding panel. This eliminates moisture problems in the façade structure and keeps local cold bridging to a minimum. This type of ventilated façade provides good levels of internal insulation and helps prevent structural corrosion. The consequent low temperature fluctuation only permits very minimal movement of the main load-bearing structure, which is good for the long life of any building.

The System TWF 2014 is suitable for low, medium and high rise buildings. It is a simple metal component system that is easily installed and is extremely durable. Being all-aluminium it is non-combustible and rust proof.



The TWF 2014 system consists of:

- PVC tape
- 18mm large headed rivets with colour matched heads
- Aluminium 'L' rails
- Aluminium 'T' rails
- 36mm neoprene gasket
- 60mm neoprene gasket
- Ventilation profiles in either PVC or aluminium

Other options include:

- Numerous adjustable aluminium projection wall brackets
- Internal corner profiles in PVC or aluminium
- External corner profiles in PVC or aluminium
- Various styles of horizontal joint profiles in PVC or aluminium

In addition to the TWF 2014 there are other Twinfix systems available for installing rainscreen cladding. Please contact us for details.



TWINFIX

201 Cavendish Place, Birchwood Park
Birchwood, Warrington, WA3 6WU
Tel: 01925 811311 Fax: 01925 852955
email: cladding@twinfix.co.uk