

Rainscreen Cladding Support System Screw Fix - Ref TWF 2013



Fixing System with screws on a timber subframe

- 1 36mm or 60mm vertical neoprene gasket
- 2 Stainless steel torx screws with colour matched heads, 38mm x 4.8mm
- 3 External corner closure in either aluminium or PVC
- 4 Horizontal 'h' joint profile in either aluminium or PVC

Sales Hotline
Tel: 01925 811311
Fax: 01925 852955

TWINFIX

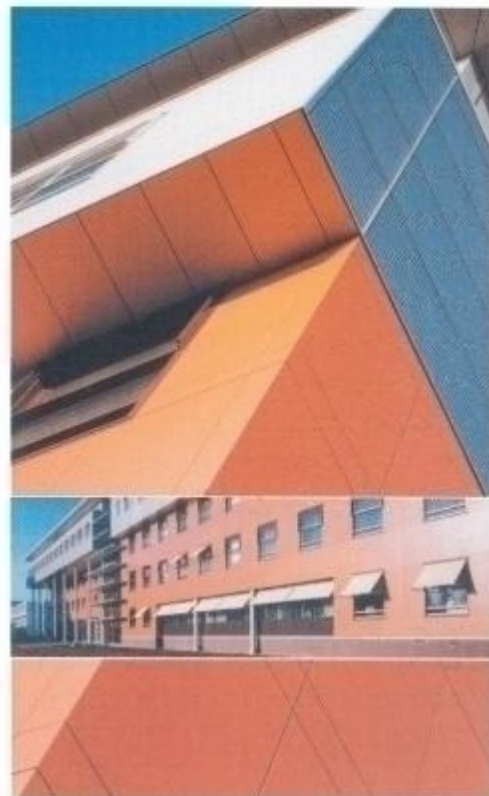
Rainscreen Cladding Support System

Screw Fix - Ref TWF 2013

Twinfix cladding support systems can be used to install many different types of high performance external cladding panels, on both new build or refurbishment projects.

All Twinfix systems are fully ventilated at upper and lower edges. Some form of water resistant insulation is usually positioned immediately adjacent to the internal wall, leaving a minimum ventilation gap of 25mm between the insulation and the rainscreen cladding panel. This eliminates moisture problems in the façade structure and keeps local cold bridging to a minimum. This type of ventilated façade provides good levels of internal insulation and helps prevent structural corrosion. The consequent low temperature fluctuation only permits very minimal movement of the main load-bearing structure, which is good for the long life of any building.

The TWF 2013 is particularly suited to low and medium height buildings. This fixing system is economical and durable and uses screw fixings on to timber battens. Timber battens are widely used for countless applications, ranging from fascias and soffits through to total façade cladding. This system is also specified for its long term bio-degradability.



The TWF 2013 system consists of:

- Stainless steel torx screws with colour matched heads
- 36mm neoprene gasket
- 60mm neoprene gasket
- Ventilation profile in either PVC or aluminium

Other options include:

- Internal and external corner profiles in PVC or aluminium
- External corner profiles in PVC or aluminium
- Various styles of horizontal joint profiles in PVC or aluminium

In addition to the TWF 2013 there are other Twinfix systems available for installing rainscreen cladding. Please contact us for details.



TWINFIX

201 Cavendish Place, Birchwood Park
Birchwood, Warrington, WA3 6WU
Tel: 01925 811311 Fax: 01925 852955
email: cladding@twinfix.co.uk