

Case Study

Twinfix Enhances Bradford Station with Modern Roof

September 2025

Twinfix, a leading UK manufacturer of canopies and roof glazing solutions, has successfully completed a significant project at Bradford station, providing a durable and visually enhanced roofing solution.

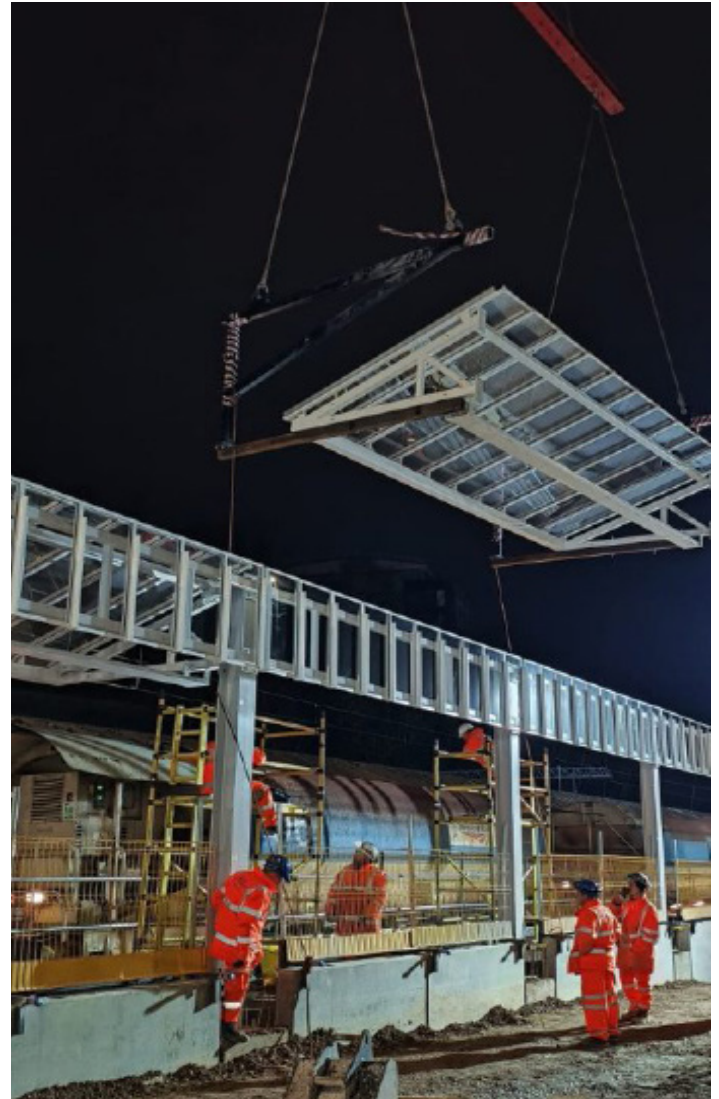
This initiative forms part of a major government investment in Yorkshire's rail infrastructure and aligns with Bradford's designation as the UK's City of Culture for 2025.

Bradford station, a key transport hub in the region, required a roof glazing upgrade to improve safety, sustainability, and passenger experience. Twinfix was selected for its expertise in the rail sector, with a proven track record of delivering high-quality, long-lasting solutions for station refurbishments across the UK.

The project involved the design, manufacture, and supply of Twinfix's innovative Multi-Link-Panel NF (Non-Fragile) system, featuring polycarbonate glazing. Each panel was fitted with 6mm clear solid polycarbonate, a high-performance material offering superior strength and impact resistance compared to traditional glass. Unlike glass, which can crack, shatter, or degrade over time, polycarbonate provides a safe, durable, and low-maintenance solution, ensuring long-term performance while maintaining excellent clarity.

The Multi-Link-Panel NF system offers several key benefits:

- **Non-fragile design** – Enhances safety for maintenance teams, reducing the risk of accidents.
- **Quick installation** – Pre-assembled panels speed up the installation process, minimising disruption to station operations.
- **Lightweight and strong** – Provides high impact resistance while being significantly lighter than glass, reducing structural load.
- **UV protection** – Maintains clarity and durability over time, preventing yellowing or degradation.
- **Sustainable solution** – Long lifespan and fully recyclable components support eco-friendly infrastructure.



David Smith MCIQB, Production Director at Miller Fabrications, where the dry assembly process took place, praised Twinfix for their professionalism and service:

"Working with Twinfix on the Bradford station project was a seamless and highly efficient process. From initial planning through to delivery, their attention to detail and commitment to excellence were evident at every stage. The level of organisation, clear communication, and overall service provided by the Twinfix team was fantastic. Their expertise ensured a smooth dry assembly process at our facility in Scotland, making installation on-site both efficient and hassle-free. I would not hesitate to recommend Twinfix for future projects requiring high-quality, innovative roof glazing solutions."

"We are proud to have played a role in the regeneration of Bradford station as part of this wider investment in Yorkshire's rail network," said Vicky Evans, Director at Twinfix. "Our Multi-Link-Panel NF system provides a modern, lightweight, and impact-resistant solution, ensuring the station remains a safe and welcoming environment for passengers."

This investment in Bradford's infrastructure supports the city's preparations for its role as the UK's City of Culture 2025, reinforcing its position as a key destination for both commuters and visitors.

As a trusted partner to the rail sector, Twinfix remains committed to delivering cutting-edge, sustainable solutions for station refurbishments nationwide.



Directors
S Kench | D Smith
V Evans | P Greenfield

Registered in England. Company No. 2457221

