

All you need to know about...

P320 Rafter Gasket Glazing System

January 2010

Standard System

Reference: P320
Colour: Mill Finish, White or Brown (RAL colours to order)
Length: 3 metre and 4 metre (and 6 metres as individual components)

Description:

An aluminium capped rafter gasket glazing system into which multiwall polycarbonate up to 25mm thickness can be fitted.

The P320 system is designed to be fitted onto 60mm wide rafters and consists of a 60mm wide rafter gasket (ref. 261), an aluminium cap (ref. 320), an aluminium screw cover clip (ref. 400C), gaskets (ref 280G) and an aluminium screw fit end plate (ref. 320EP).

The rafter gasket is nailed to the rafter using galvanised nails at 300mm intervals and the glazing sheet sits on the rafter gasket. A feature of the system is in the securing of the cap to the rafter, the cap is drilled at intervals no more than 350mm apart and 65mm stainless steel wood screws are then fitted through the fixing channel in the cap into the rafter. The fixing channel is then covered and protected by an aluminium screw cover clip. No screws are visible, the clip is also supplied as part of the pre-pack.

The P320 system is supplied as a pre-pack in 3 metre and 4 metre lengths and as loose items in 6 metres. P320 is available in a polyester powder coated white (RAL 9910 satin) and brown (RAL 8040 satin). We can also supply the aluminium cap and end plate painted to a specific RAL colour although this may be subject to a minimum quantity requirement and surcharge.

Hip System

Reference: P320H
Colour: Mill Finish, White or Brown
Length: 3 metre and 4 metre (and 6 metres as non-standard)

To make the bar suitable for a hipped application, the gasket in the glazing bar cap is replaced by a half-round gasket and re-named as P320H. The P320H is supplied as a pre-pack in 3 metre and 4 metre lengths and as loose items in 6 metres. The 3 metre and 4 metre pre-pack consists of the aluminium glazing bar cap, aluminium screw cover clip, hipped gasket, 60mm wide rafter gasket and an aluminium screw fit end plate.

Applications:

- Rafter Assembly Roofing
- Canopies
- Lean-To Conservatories
- Conservatories
- Car Ports
- Porches

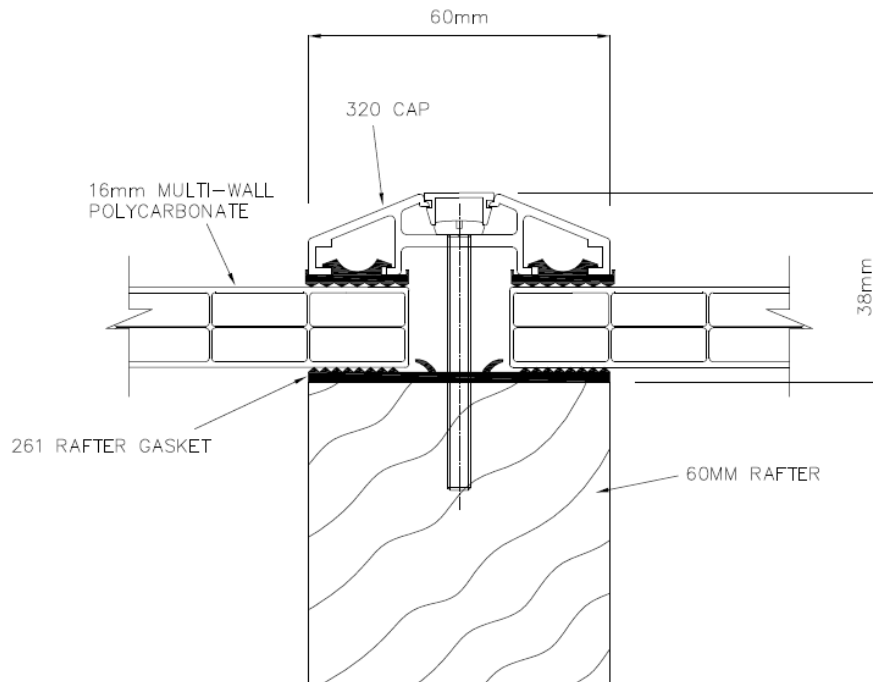
* **NOTE:** Maximum recommended polycarbonate glazing centres, i.e.:

10mm sheet	=	700 mm
16mm sheet	=	990mm
25mm sheet	=	1250mm

Glazing with Glass

The P320 system is suitable for use with glass. Twinfix cannot advise as to the size of rafters required or at what centres they should be placed. Twinfix do recommend that a mechanically fixed end plate similar to our RGMEP end plate be fitted at the foot of each bar.

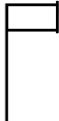


P320 RAFTER GASKET GLAZING BAR SYSTEM



The P320 system is used to install multiwall polycarbonate, solid polycarbonate or glass in thickness ranging from 4mm to 25mm onto rafters at least 60mm in width. The P320 can be supplied either as a pre-pack complete with the aluminium cap which has a secret fix channel, gaskets and end plate or as loose individual items. The P320 system can also be supplied as a hipped system which uses the same cap however we change the standard gasket to a half round gasket which allows the sheet to be fitted at an angle.

- Rafter width:** Minimum 60mm
- Pack lengths available:** 3 metres, 4 metres
- Pack contents:**
 261 rafter gasket
 320 aluminium cap with gasket fitted
 400C aluminium clip
 320EP screw fit stop end plate
- Loose item lengths available:** 6 metres
- Colours available:** Mill, or powder coated white or brown
 RAL or BS colours to special order

Complementary Fixing Accessories for use with the P320 rafter gasket system:

Side Trim Ref 272 – 10mm Ref 273 – 16mm Ref 275 – 25mm 	U Profile Ref 252 – 10mm Ref 253 – 16mm Ref 255 – 25mm 
Eaves Filler Ref 226F 	Fixing Buttons (white) Ref244P – 10mm Ref245P – 16mm Ref249P – 25mm Fixing Buttons (Brown) Ref247P – 10mm Ref248P – 16mm Ref250P – 25mm
Anti-dust/Breather Tape Ref FT or PBT 10 Ref FT or PBT 16 Ref FT or PBT 25	Butyl Flashing 200/20 White 200/20 Lead